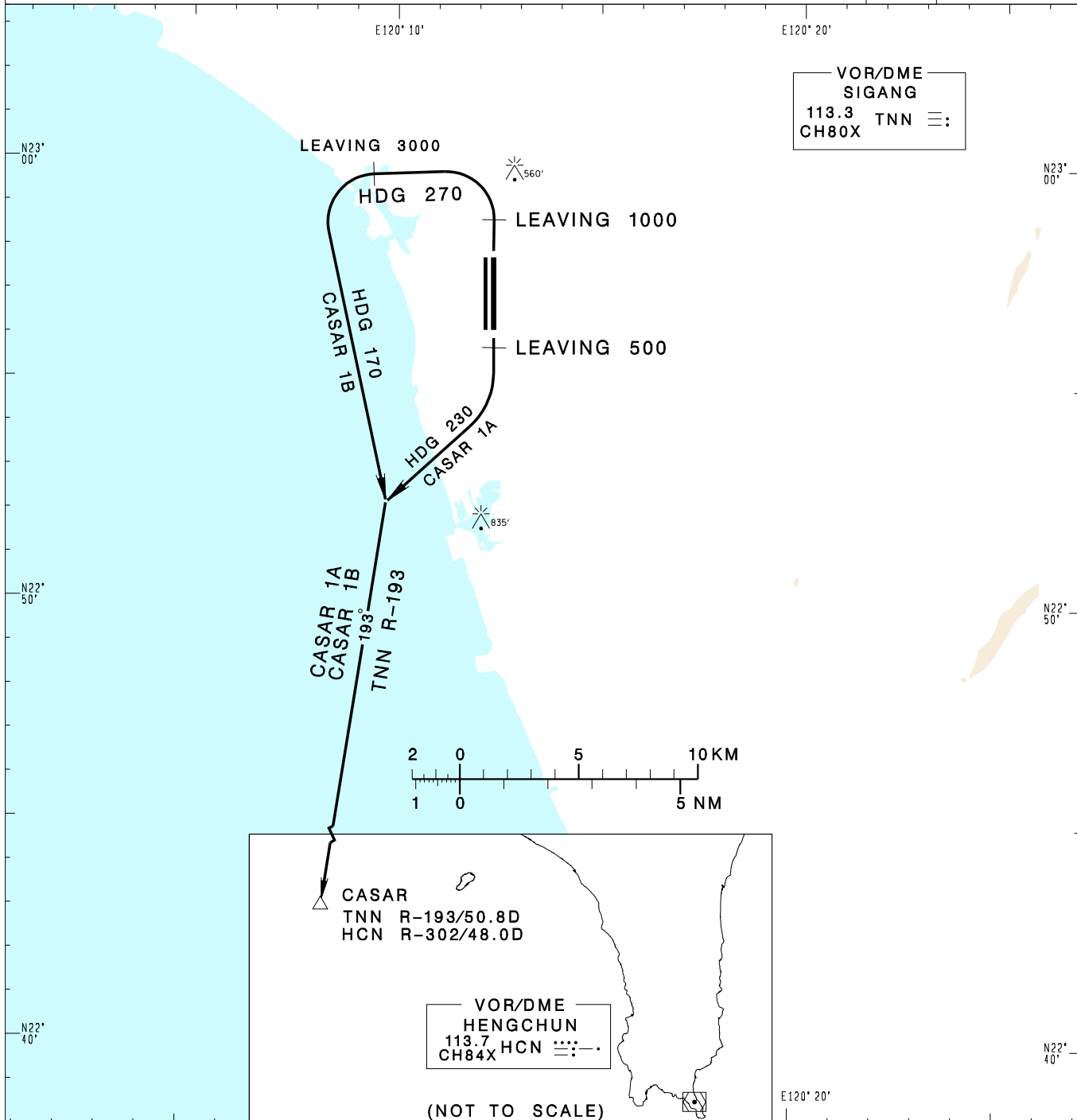


臺南機場
TAINAN AD

RCNN SID
CASAR 1A(RWY18L)
CASAR 1B(RWY36R)

KAOSIUNG APP 124.7 363.8	TAINAN TWR 118.4 236.6 126.18	GROUND 121.6	ATIS NIL	VAR 4°W-2023 ↑	7600' MSA ARP 25NM		
Apt Elev: 64'		Trans Level: FL130				Trans Alt: 11,000'	
BEARINGS ARE MAGNETIC; DISTANCES ARE NAUTICAL MILES; ELEVATIONS, HEIGHTS IN FEET							



CHANGES: NEW CHART

CASAR ONE ALFA DEPARTURE
Climb on RWY HDG until leaving 500ft, then turn right HDG 230 to track TNN R-193 to CASAR to join airway.

CASAR ONE BRAVO DEPARTURE
Climb on RWY HDG until leaving 1,000ft, then turn left HDG 270 until leaving 3,000ft, then turn left HDG 170 to track TNN R-193 to CASAR to join airway.

NOTE

- CASAR 1A:**
Minimum climb gradient required:
3.8%(235ft/NM) until 1,200ft.
- CASAR 1B:**
Minimum climb gradient required:
5.6%(340ft/NM) until 1,000ft.
ATS Surveillance required.